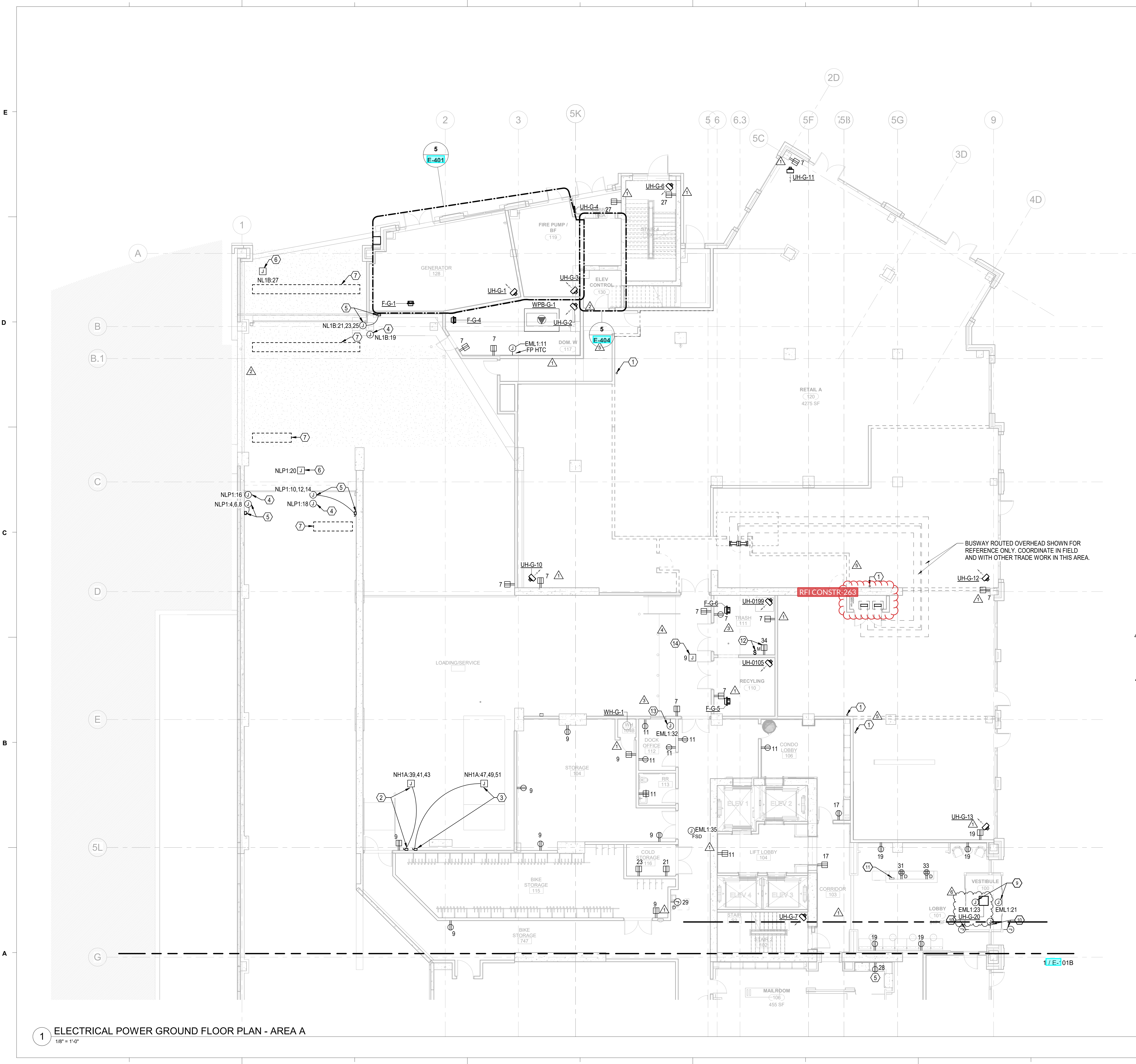


Autodesk Docs/9857472856/AustinLawrencePartners - Five Points/MEP_Durham Five Points Center 22.rvt
2/14/2025 4:18:46 PM



FLOOR PLAN SHEET NOTES

- SEE EQUIPMENT CONNECTION SCHEDULES FOR EQUIPMENT CIRCUITING INFORMATION.
- CIRCUIT TO PANEL NL1A UNLESS OTHERWISE NOTED.

KEYED NOTES

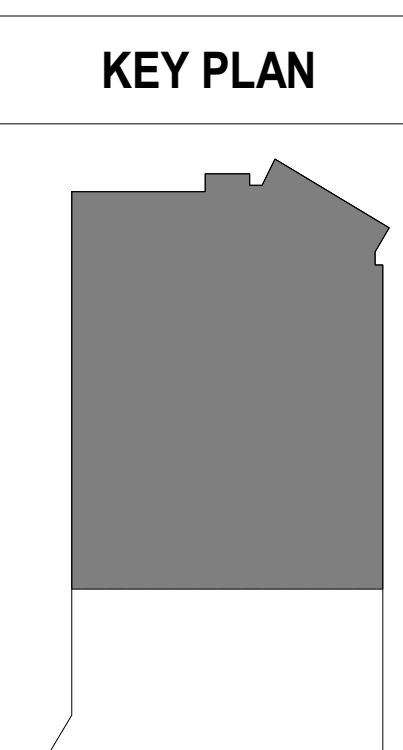
- TERMINATE AND CAP CONDUIT FROM MAIN ELECTRICAL ROOM IN RETAIL SPACE AND LABEL. SEE RISER DIAGRAM FOR CONDUIT SIZE. COORDINATE LOCATION WITH OWNER.
- JUNCTION BOX AND DISCONNECT FOR TRASH COMPACTOR (TC-1). SEE MECHANICAL CONNECTION SCHEDULE FOR DETAILS. COORDINATE LOCATION WITH TRASH COMPACTOR INSTALLER. INCLUDE 120V WIRING FOR EQUIPMENT CONTROLS.
- JUNCTION BOX FOR TRASH COMPACTOR (TC-2). SEE MECHANICAL CONNECTION SCHEDULE FOR DETAILS. COORDINATE LOCATION WITH TRASH COMPACTOR INSTALLER. INCLUDE 120V WIRING FOR EQUIPMENT CONTROLS.
- POWER FOR PARKING SYSTEM EQUIPMENT CONTROLS. COORDINATE FINAL ELECTRICAL REQUIREMENTS WITH PARKING SYSTEM EQUIPMENT PROVIDER.
- CIRCUIT POWER FOR ROLL-UP GATE THROUGH DISCONNECT. COORDINATE LOCATION AND FINAL CONNECTION REQUIREMENTS WITH EQUIPMENT PROVIDER. MOUNT THE SAME HEIGHT OR HIGHER THAN THE ROLL-UP DOOR MOTOR.
- JUNCTION BOX FOR ENTRANCE KIOSK MOUNTED IN SLAB WITH 1" CONDUIT TO JUNCTION BOX ABOVE. COORDINATE FINAL CONNECTION REQUIREMENTS WITH EQUIPMENT PROVIDER. CONCEAL ALL CONDUIT.
- PROVIDE 0.5" CONDUIT TO ROLL-UP DOOR SENSORS ON SLAB ABOVE FOR POWER AND CONTROLS. COORDINATE LOCATION OF SENSORS WITH ROLL-UP DOOR INSTALLER.
- POWER FOR WATER COOLER. COORDINATE LOCATION AND FINAL CONNECTION REQUIREMENTS WITH EQUIPMENT.
- POWER FOR DOOR OPENERS.
- PROVIDE 1" CONDUIT TO ABOVE ACCESSIBLE CEILING FOR DOOR OPENER POWER AND CONTROL CABLING.
- REMOTE GENERATOR ANNUNCIATOR PANEL. COORDINATE FINAL LOCATION WITH ARCHITECT AND OWNER.
- POWER FOR TRASH CHUTE MASTER SWITCH. MOUNT MOTOR RATED SWITCH ADJACENT TO MASTER SWITCH.
- POWER FOR SUMP PUMP CONTROL POWER. COORDINATE FINAL CONNECTION REQUIREMENTS WITH EQUIPMENT.
- PROVIDE CONNECTION FOR HEAT TRACE POWER. COORDINATE LOCATION WITH PLUMBING DRAWINGS.

PARTITION LEGEND

- ALL EXTERIOR WALLS TO BE U.N.O.
- ALL INTERIOR MASONRY PARTITIONS TO BE U.N.O.
- ALL INTERIOR METAL STUD PARTITIONS TO BE TYPE U.N.O.

- NON-RATED PARTITION TO CEILING
- NON-RATED PARTITION TO DECK
- 1 HR. RATED PARTITION TO DECK
- 2 HR. RATED PARTITION TO DECK
- 4 HR. RATED PARTITION TO DECK

NOTE: SEE SHEET A003 FOR CONSTRUCTION OF PARTITION TYPES.

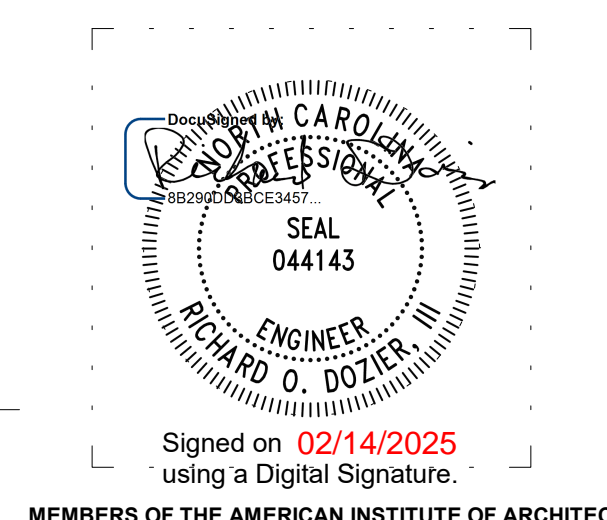


THE NOVUS

Newcomb & Boyd
CONSULTANTS AND ENGINEERS
5425 Page Road
Suite 215
Durham, NC 27703
T 919 783-7812
Contact: Paul J. Kilchens
N&B PROJECT: 17N133
Newcomb & Boyd, LLP
Firm License No. F-0312

LS3P

227 WEST TRADE STREET SUITE 700
CHARLOTTE, NORTH CAROLINA 28202
TEL. 704.333.6686 FAX 704.333.2926
WWW.LS3P.COM



MEMBERS OF THE AMERICAN INSTITUTE OF ARCHITECTS

COPYRIGHT 2021 ALL RIGHTS RESERVED
PRINTED OR ELECTRONIC DRAWINGS AND DOCUMENTATION MAY NOT BE REPRODUCED IN ANY FORM WITHOUT WRITTEN PERMISSION FROM LS3P ASSOCIATES LTD.

REVISIONS:

No.	Description	Date
1	Revision Comments - 001	6/27/2022
2	CCD-005	09/23/2022
3	CCD-014	08/07/2023
4	Bulletin #16	11/14/2024
5	CCD-021	11/22/2024
6	BULLETIN #21	02/14/2025

PROJECT: 9512-172950
DATE: 02/14/2025
DRAWN BY: SAN
CHECKED BY: CDB

ELECTRICAL POWER GROUND FLOOR PLAN - AREA A

E-101A

1 ELECTRICAL POWER GROUND FLOOR PLAN - AREA A
1/8" = 1'-0"